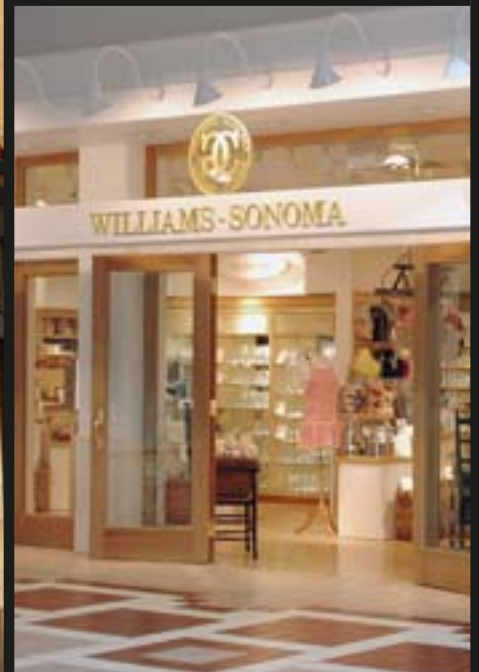




# Boise Towne Square

BOISE, IDAHO



# Boise Towne Square BOISE, IDAHO

## THE MERCHANDISING

- More than 180 stores serve over 12 million annual customers. Key retailers include Banana Republic, Williams-Sonoma, Pottery Barn, Build-A-Bear Workshop, Ann Taylor, Abercrombie & Fitch, abercrombie, Hollister Co., Aeropostale, American Eagle Outfitters, Children's Place, PacSun, Buckle, Torrid, Sephora and Gymboree.
- Five strong department stores including Macy\*s, Dillards, JCPenney, Sears and Mervyns.
- Boise Towne Square completed an exterior redevelopment in 2006/2007. The bold new entry features Cheesecake Factory and Old Chicago and, opening in 2007, Borders and Talbot's.

## THE LOCATION

- Conveniently located off I-84, the state's third busiest intersection. Daily drive-by traffic on I-84 in excess of 63,000 automobiles.
- Encompasses a large primary geographic trade area of more than 1,300 square miles.
- Forbes, Wall Street Journal and organizations like KPMG and the National Policy Research Council annually rate the Boise Valley among the best places in the country to do business.
- Boise is the birthplace of major multinational companies including Morrison Knudsen (now WGI), Micron Technology, Albertsons/Sav-On, Simplot Company and Boise Cascade.
- Technology is an \$11 billion local industry with more than 50,000 technology workers living and working in the Boise Valley.
- Boise Valley is one of the fastest growing regions in the U.S. in terms of job and population growth.



## MALL INFORMATION

### LOCATION

Located at the intersection of Franklin and Milwaukee off of Interstate I-84 and I-184

### MARKET

Boise, Idaho

### DESCRIPTION

Two level, enclosed, super regional center

### ANCHORS

Macy\*s, Dillard's, JCPenney, Sears and Mervyn's

TOTAL RETAIL SQUARE FOOTAGE 1,166,413

PARKING SPACES 5,403

OPENED October 1988

EXPANDED August 1998

RENOVATED Fall 2007

## TRADE AREA PROFILE

2007 POPULATION 547,632

2012 PROJECTED POPULATION 620,874

2007 HOUSEHOLDS 203,549

2012 PROJECTED HOUSEHOLDS 231,728

2007 MEDIAN AGE 33.9

2007 AVERAGE HH INCOME \$62,838

2012 PROJECTED AVERAGE HH INCOME \$69,126

## 10-MILE RADIUS PROFILE

2007 POPULATION 337,127

2012 PROJECTED POPULATION 373,965

2007 HOUSEHOLDS 130,683

2012 PROJECTED HOUSEHOLDS 146,406

2007 MEDIAN AGE 35.3

2007 AVERAGE HH INCOME \$68,470

2012 PROJECTED AVERAGE HH INCOME \$75,447

## DAYTIME EMPLOYMENT

3-MILE RADIUS 81,193

5-MILE RADIUS 193,744

SOURCE: CLARITAS, INC.